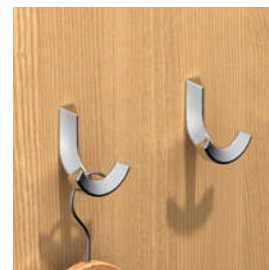
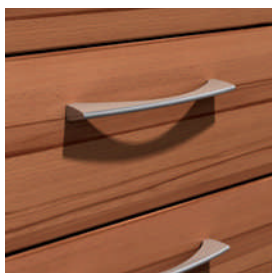


BFB

SCHWINN

5

DE | EN | FR | ES



## Creativ Kollektion

Creativ Collection  
Collection créativ  
Colección creativa



# Möbelfüße

Furniture feet | Pieds de meubles | Patas de muebles

## Möbelfüße

Furniture feet | Pieds de meubles | Patas de muebles

170-183

## Rollen

Rollers | Roulettes | Ruedas

184-185

## 2921

Zamak/Aluminium  
Zamac/Aluminium  
Zamak/Aluminium  
Zamac/Aluminio



1	53031	32/32	92	92	150-165	C
2	53030	32/32	92	92	150-165	C



1

90 - 150 mm

## Z055

Zamak/Aluminium  
Zamac/Aluminium  
Zamak/Aluminium  
Zamac/Aluminio



4

## 3301

Aluminium  
Aluminio



6



3	53033	64/40	98	70	150-165	C
4	53032	64/40	98	70	150-165	C



5 50 - 100 mm  
6 50 - 200 mm



5	53701	41	41	100	A
6	53702	41	41	200	A

3761

Stahl  
Steel  
Acier  
Acero



▲  
Filz  
Felt | Feutre | Fieltro



1



2



3



4

1	53444	64	120	40	185	C
2	53443	64	120	40	230	C
3	53442	64	121	40	300	C
4	53441	64	122	40	400	C

**6435**

Kunststoff  
Plastic  
Mat. synthétique  
Plástico



1



2



1	53451	32	60	60	20	S
2	53452	32	60	60	20	C



**6154**

Kunststoff  
Plastic  
Mat. synthétique  
Plástico



3



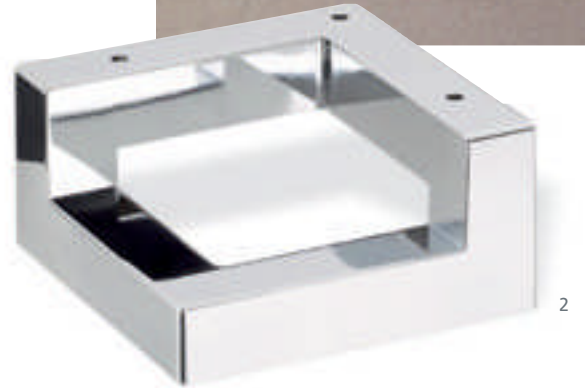
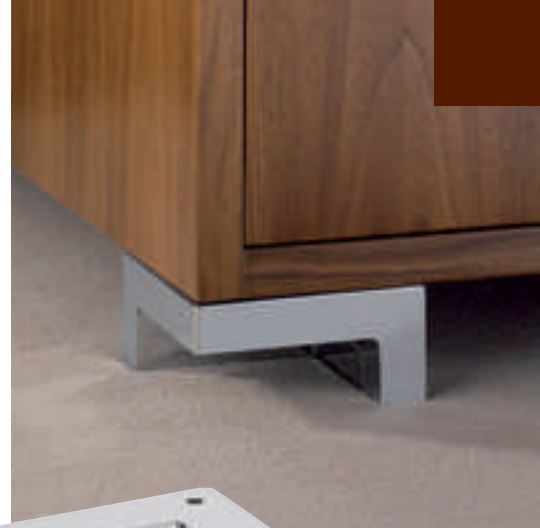
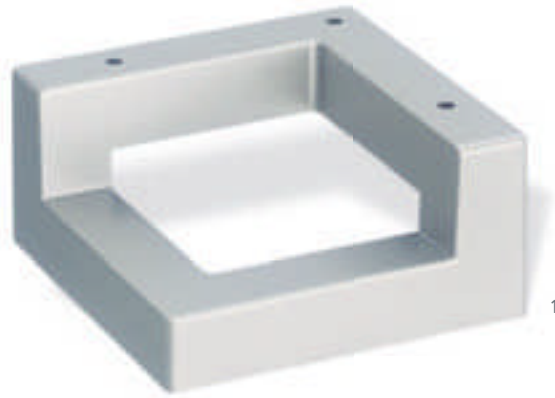
4



3	53453	64/128	151	61	25	S
4	53454	64/128	151	61	25	C

## K055

Kunststoff  
Plastic  
Mat. synthétique  
Plástico



1	53449	64/64	100	100	50	S
2	53450	64/64	100	100	50	C



## K106

Kunststoff/Aluminium  
Plastic/Aluminium  
Mat. synth./Aluminium  
Plástico/Aluminio



3	53457	32/262	284	61	80	S
4	53458	32/262	284	61	80	C

### K179

Kunststoff  
Plastic  
Mat. synthétique  
Plástico



1	53459	45/45	59/66	59/66	90-105	S
---	-------	-------	-------	-------	--------	---

### K099

Kunststoff  
Plastic  
Mat. synthétique  
Plástico



2	53460	32/32	58	58	18-24	S
---	-------	-------	----	----	-------	---



### K075

Kunststoff  
Plastic  
Mat. synthétique  
Plástico



3	53461	32/32	70	70	96-111	S
---	-------	-------	----	----	--------	---

**3629**

Aluminium  
Aluminio



1	53464	32	60	60	10	A
---	-------	----	----	----	----	---



**3613+3611**

Aluminium  
Aluminio



2	53028	32/32	80	60	80	A
3	53029	30/40	70	65	130	A

**3772**

Aluminium  
Aluminio



4	53703	30/40	70	65	130-140	A
---	-------	-------	----	----	---------	---

**2893**

Zamak  
Zamac



5	53462	38	55	29	38-53	C
6	53463	38	55	29	38-53	C

**3146-3148**

Stahl  
Steel  
Acier  
Acero



1



2



3



1	51409	32	62	62	65	S
2	51408	32	62	62	120	S
3	52188	32	87	87	175	S

**4399+4400**

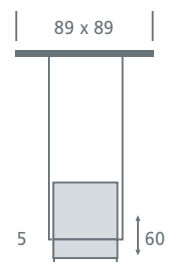
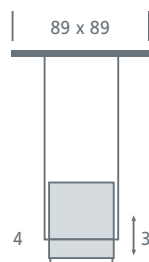
Edelstahl  
Stainless steel  
Acier inox  
Acero inoxidable



4



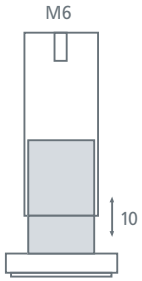
5



4	53439	67/67	101-133	50	B
5	53440	67/67	124-184	50	B

4094

Zamak  
Zamac



1

52029

109-119

39/59



4092

Zamak  
Zamac



2

52027

140

30/60



4093

Zamak  
Zamac



3

52028

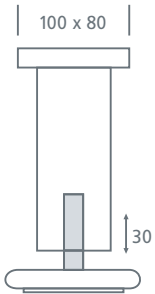
137

35/50

N

4181

Aluminium  
Aluminio



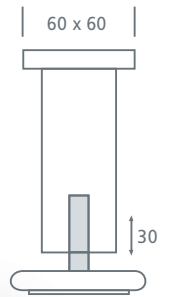
1



1	51926	60/80	180/210	70	A
---	-------	-------	---------	----	---

4180

Aluminium  
Aluminio



2



2	51925	44/44	150/180	35/55	A
---	-------	-------	---------	-------	---

4185

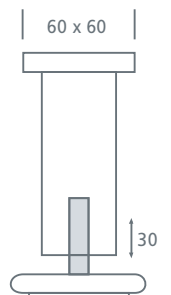
Aluminium  
Aluminio



3

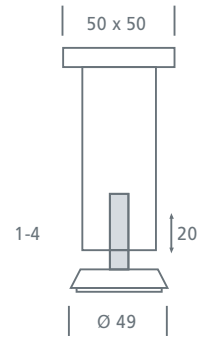


3	51927	44/44	120/150	40	A
---	-------	-------	---------	----	---



## 4437

Edelstahl  
Stainless steel  
Acier inox  
Acero inoxidable

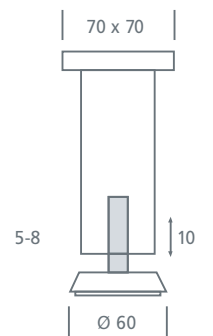


1	53714	35/35	100/120	35	B
2	53715	35/35	120/140	35	B
3	53716	35/35	150/170	35	B
4	53717	35/35	200/220	35	B



## 4443

Aluminium  
Aluminio



5	53718	55/55	80/90	40	AB
6	53719	55/55	120/130	40	AB
7	53720	55/55	150/160	40	AB
8	53721	55/55	180/190	40	AB

4445

Aluminium  
Aluminio



1



2



3



1	53722	55	45	45	100	AB
2	53723	55	45	45	130	AB
3	53724	55	45	45	180	AB



4



5



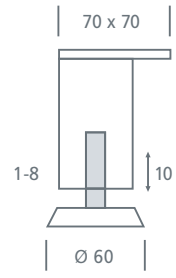
6



4	53725	55	45	45	100	E
5	53726	55	45	45	130	E
6	53727	55	45	45	180	E

4446

Aluminium  
Aluminio



1	53728	55/55	40	40	80/90	AB
2	53729	55/55	40	40	120/130	AB
3	53730	55/55	40	40	150/160	AB
4	53731	55/55	40	40	180/190	AB



5	53732	55/55	40	40	80/90	E
6	53733	55/55	40	40	120/130	E
7	53734	55/55	40	40	150/160	E
8	53735	55/55	40	40	180/190	E

4095

Zamak  
Zamac



1	52030	54/66	140	80	128	60	E

4091

Zamak  
Zamac



2	52026	22	120	45	82		C

4090

Zamak  
Zamac



3	52025	52	145	70	98	38	C



2948

Zamak  
Zamac



1



2



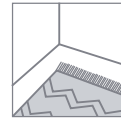
3








1	52567	32/56	138	56	100	55	N
2	52566	32/56	138	56	100	55	C
3	52568	32/56	138	56	100	55	C



**2981**

Zamac/Kunststoff  
Zamac/Plastic  
Zamak/Mat. synth.  
Zamak/Plástico

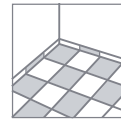


1

1



1	52950	32/32	68	73	71	68	40	C
2	52951	32/32	68	74	72	68	40	C



**2984**

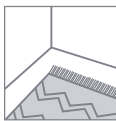
Zamac/Kunststoff  
Zamac/Plastic  
Zamak/Mat. synth.  
Zamak/Plástico



2

**Z099**

Zamac/Kunststoff  
Zamac/Plastic  
Zamak/Mat. synth.  
Zamak/Plástico



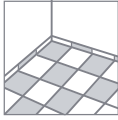
3



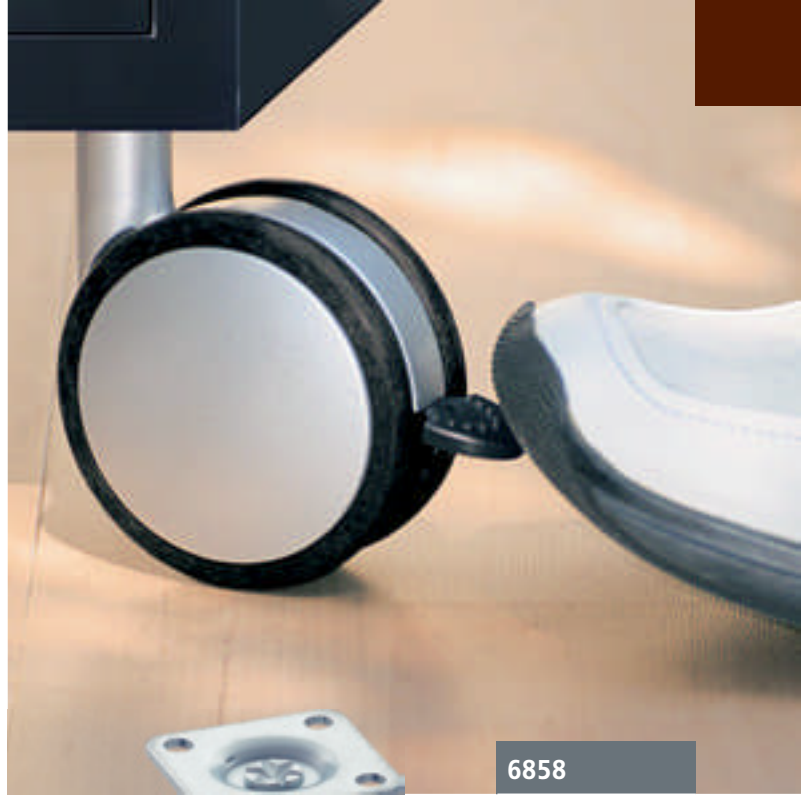
3	53465	32732	70	57	80	70	40	S
---	-------	-------	----	----	----	----	----	---

6859

Zamak/Kunststoff  
Zamac/Plastic  
Zamak/Mat. synth.  
Zamak/Plástico

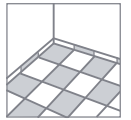


1



6858

Zamak/Kunststoff  
Zamac/Plastic  
Zamak/Mat. synth.  
Zamak/Plástico



2

1	52954	32/32	81	47	94	80	40	S
2	52952	32/32	102	47	94	80	40	S

4550

Metall  
Metal



3



3	52987	32/32	57	10/22/44	40	S

**BFB GmbH**

Daimlerstraße 12

D-71083 Herrenberg

T +49 (0) 7032-2028-0

F +49 (0) 7032-2028-20

[info@bfb-gmbh.de](mailto:info@bfb-gmbh.de)

[www.bfb-gmbh.de](http://www.bfb-gmbh.de)